

ProBuild™ XT6 Adjustable Dually Adapter Set (#BRXT6DU)

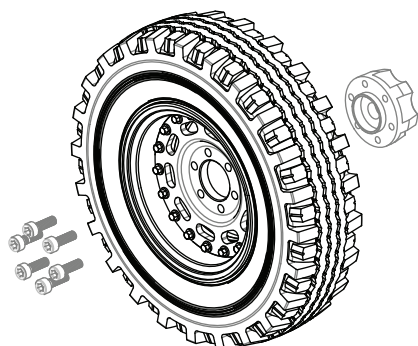
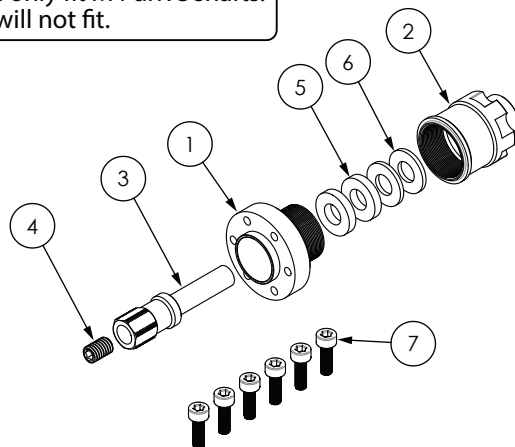
Difficulty Level: ★★☆☆☆

INSTALLATION MANUAL

This product will only fit M4 drive shafts.
M5 drive shafts will not fit.

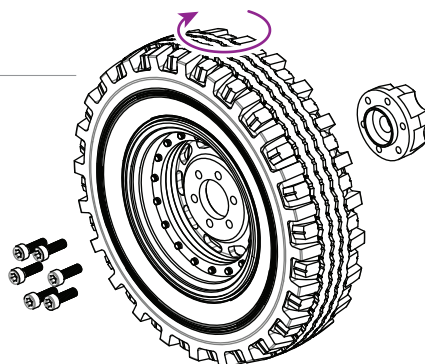
Parts Included:

	Qty.
(1) Hub	2
(2) Connector	2
(3) M4 Barrel Nut - 18mm	2
(4) M4 x 6 Set Screw	2
(5) Spacer - D5 x 10.5 x 2 mm	4
(6) Spacer - D5 x 10.5 x 1 mm	4
(7) M2.5x8 SC	12



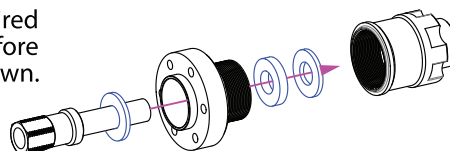
1.
Remove the XT6 wheel hub from its original position as a single rear wheel.

2.
To build the inner wheel, flip the wheel and install the XT6 hub on the other side of the faceplate.

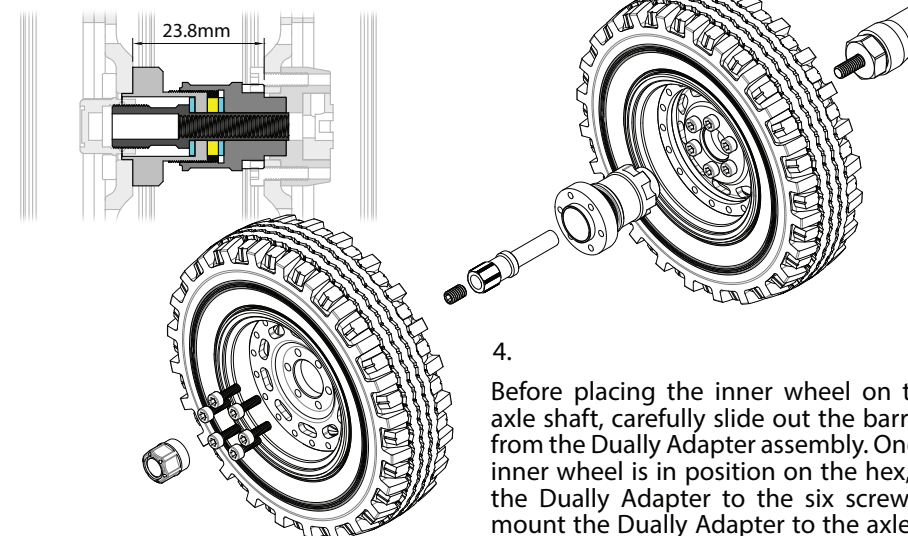


3.
Assemble the Dually Adapter. Install your desired number of spacer(s) on the barrel nut (3) before tightening the hub (1) to the connector (2) as shown.

*Read the note about the spacers.



Suggested Dually Adapter width for the sample tire shown
(Mileage Classic width: 1.0"/26mm)



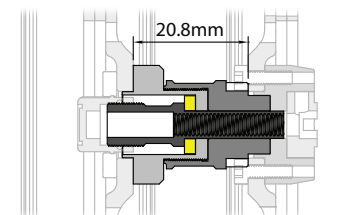
4.
Before placing the inner wheel on to the axle shaft, carefully slide out the barrel nut from the Dually Adapter assembly. Once the inner wheel is in position on the hex, align the Dually Adapter to the six screws and mount the Dually Adapter to the axle shaft by tightening the barrel nut**.

Next, use the set screw to interlock the barrel nut to securely tighten the barrel nut. The set screw should be tightened all the way down pushing against the axle shaft. Finally, install the outer wheel to the Dually Adapter and install the wheel cap.

*Spacers are provided to adjust the distance between the hub and the connector to accommodate different tire widths.

** Spacers are also used to adjust the position of the barrel nut based on the different widths of the Dually Adapter assembly, ensuring the barrel nut is fully tightened before rubbing against the hex on the inside wheel.

Minimum Distance



Maximum Distance

